

Zone Residential 1  
 Total Area 809 m<sup>2</sup>

**Lot 1 - 407 m<sup>2</sup>**

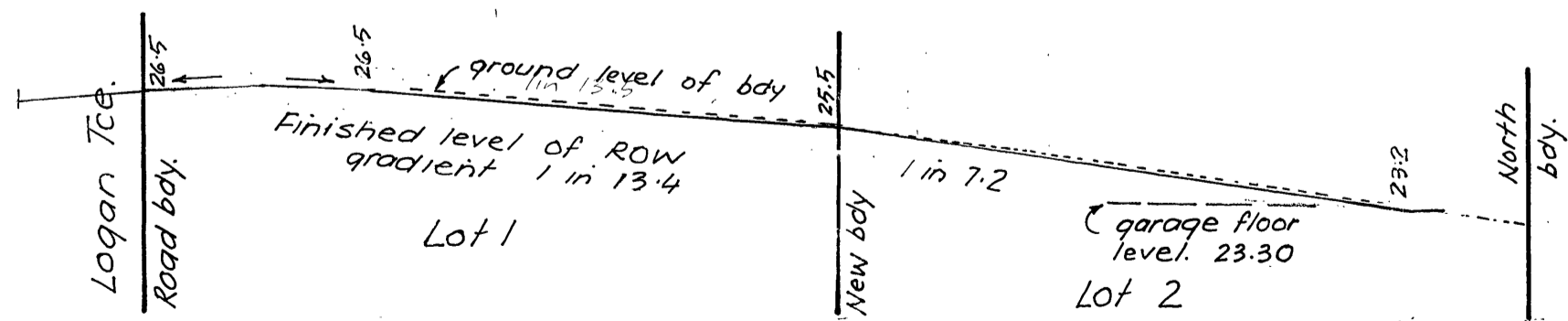
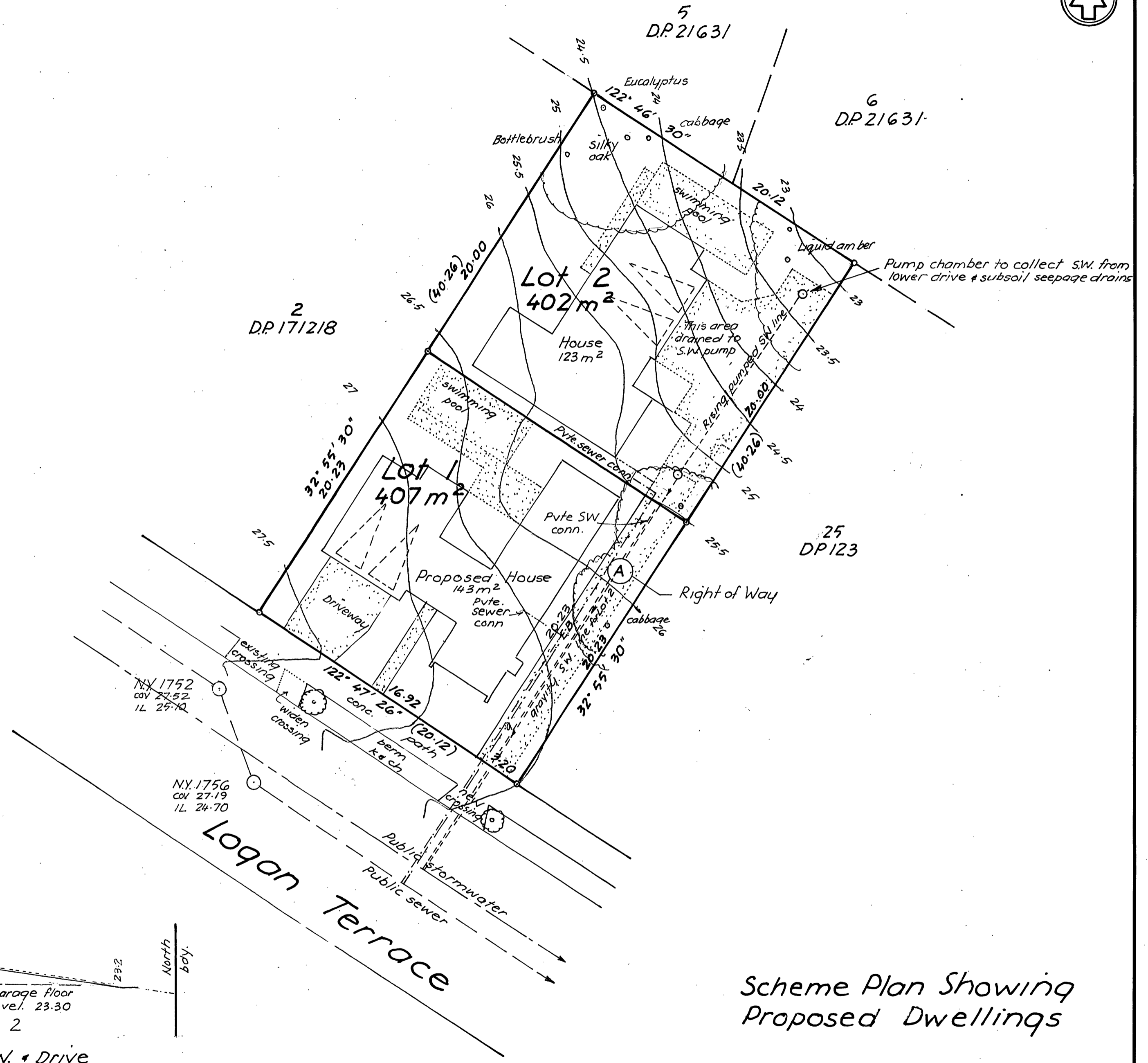
Building Site Cover 164 m<sup>2</sup> = 40.29% (3.6 m<sup>2</sup> under) complies  
 Impermeable Cover 90 m<sup>2</sup> = 22.11% (1.5 m<sup>2</sup> under) complies  
 Landscaped permeable 153 m<sup>2</sup> = 37.59% (5.3 m<sup>2</sup> over) complies  
 Frontyard Landscaping 41.7 m<sup>2</sup> = 66.43% (10.32 m<sup>2</sup> over) complies  
 Private open space 82 m<sup>2</sup> complies  
 Parking 2 x covered complies  
 Height in relation to bdy. qable end provisions apply complies  
 Earthwork 307 m<sup>2</sup> LUC required

**Lot 2 402 m<sup>2</sup>**

Building Site Cover 151 m<sup>2</sup> = 37.56% (15.8 m<sup>2</sup> under) complies  
 Impermeable Cover 90 m<sup>2</sup> = 22.39% (0.1 m<sup>2</sup> under) complies  
 Landscaped permeable 161 m<sup>2</sup> = 40.05% (15.9 m<sup>2</sup> over) complies  
 Private open space 147 m<sup>2</sup> = complies  
 Parking 2 x covered complies  
 Height in relation to bdy. qable end provisions apply complies  
 Earthwork 308 m<sup>2</sup> LUC required

**Memorandum of Easements.**

Purpose	Shown	Servient ten	Dominant ten.
Right of way, gas, water, telecommunications, electricity, sewerage, stormwater	(A)	Lot 1	Lot 2



Longitudinal Section of ROW & Drive

Scheme Plan Showing  
 Proposed Dwellings

Levels are in terms of Lands & Survey datum.

**Proposed Subdivision of Lot 24 D.P. 123**  
 No 12 Logan Terrace - Parnell  
 C.T. 42/37 - J & W Chaplow

Surveyed by Brian Trafford Ltd Licensed Cadastral Surveyor 88 Arney Rd Remuera Ph 5202247		SHEET 2
DRAWN BST	CHECKED	SERIES OF 2
TRACED	DATE 24/05/10	REF 70/21
SCALES 1:200 (A2)		