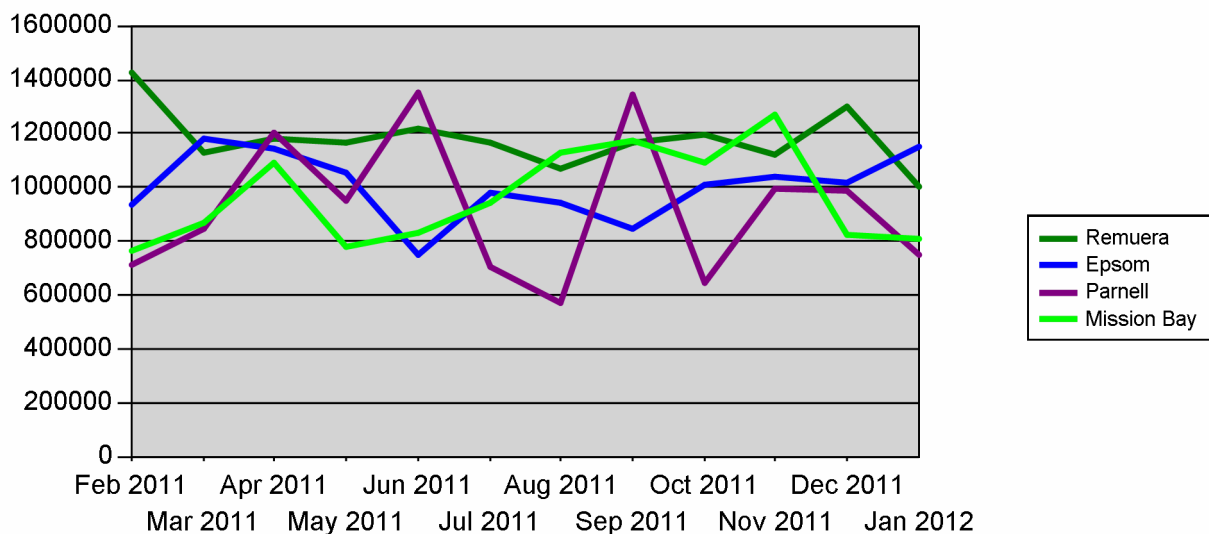


Average Sale Price

From Feb 2011

To Jan 2012



Year	Month	Remuera	Epsom	Parnell	Mission Bay
2011	Feb	1,428,650	937,679	709,650	762,944
2011	Mar	1,124,989	1,180,812	845,667	867,417
2011	Apr	1,184,119	1,143,972	1,202,900	1,088,385
2011	May	1,163,964	1,055,342	952,722	780,857
2011	Jun	1,215,364	749,240	1,353,263	832,500
2011	Jul	1,162,707	976,239	707,208	941,889
2011	Aug	1,071,607	939,268	573,000	1,130,929
2011	Sep	1,168,122	843,358	1,341,731	1,170,333
2011	Oct	1,197,796	1,011,413	641,714	1,089,031
2011	Nov	1,120,991	1,040,224	990,800	1,267,938
2011	Dec	1,296,786	1,014,725	983,912	821,071
2012	Jan	998,783	1,148,694	751,250	806,000

End of Report